

Drummond Bay



Overview

Positioned squarely in western Jackson County, Florida's Agriculture Belt, the 301-acre Drummond Bay tract is named for the natural hardwood swamp that occupies 100+ acres in the western part of the property. Along its eastern edges, are a series of pretty sloughs which offer wildlife diversity and good hunting opportunities. The remainder of the property contains large well-managed contiguous uplands consisting of young planted pine plantations that will provide a significant future income stream. Approximately 160 acres in this area have soils that are classified by the USDA as Farmland of Local Importance.

Drummond Bay enjoys a mile of paved road frontage, most of which is on Highway 169 (Peanut Road). Access is excellent with Dothan, Alabama just 30 minutes away and Panama City, Florida only an hour drive. Additionally, the Interstate 10 - US Highway 231 interchange is five miles away.

At a Glance:

Acreage:

301± acres

Asking Price:

\$2,600 per acre

Location:

Jackson County, Florida

Special Attributes:

- Low Price per Acre
- Well Managed Timber Stands
- Productive Upland Soils
- Natural Hardwood Swamp
- Excellent Access

Arnie Rogers, *Licensed Real Estate Broker*

Verdura Realty, LLC • 316 Williams Street • Tallahassee, FL 32303

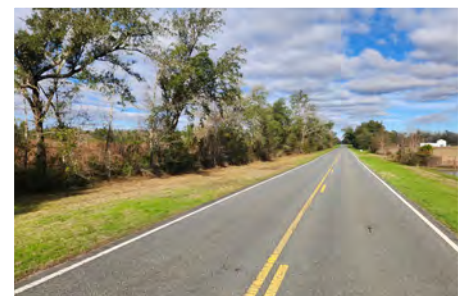
Cell: 850.491.3288 • Email: arogers@verduraproperties.com

www.VerduraProperties.com



Drummond Bay

Photos



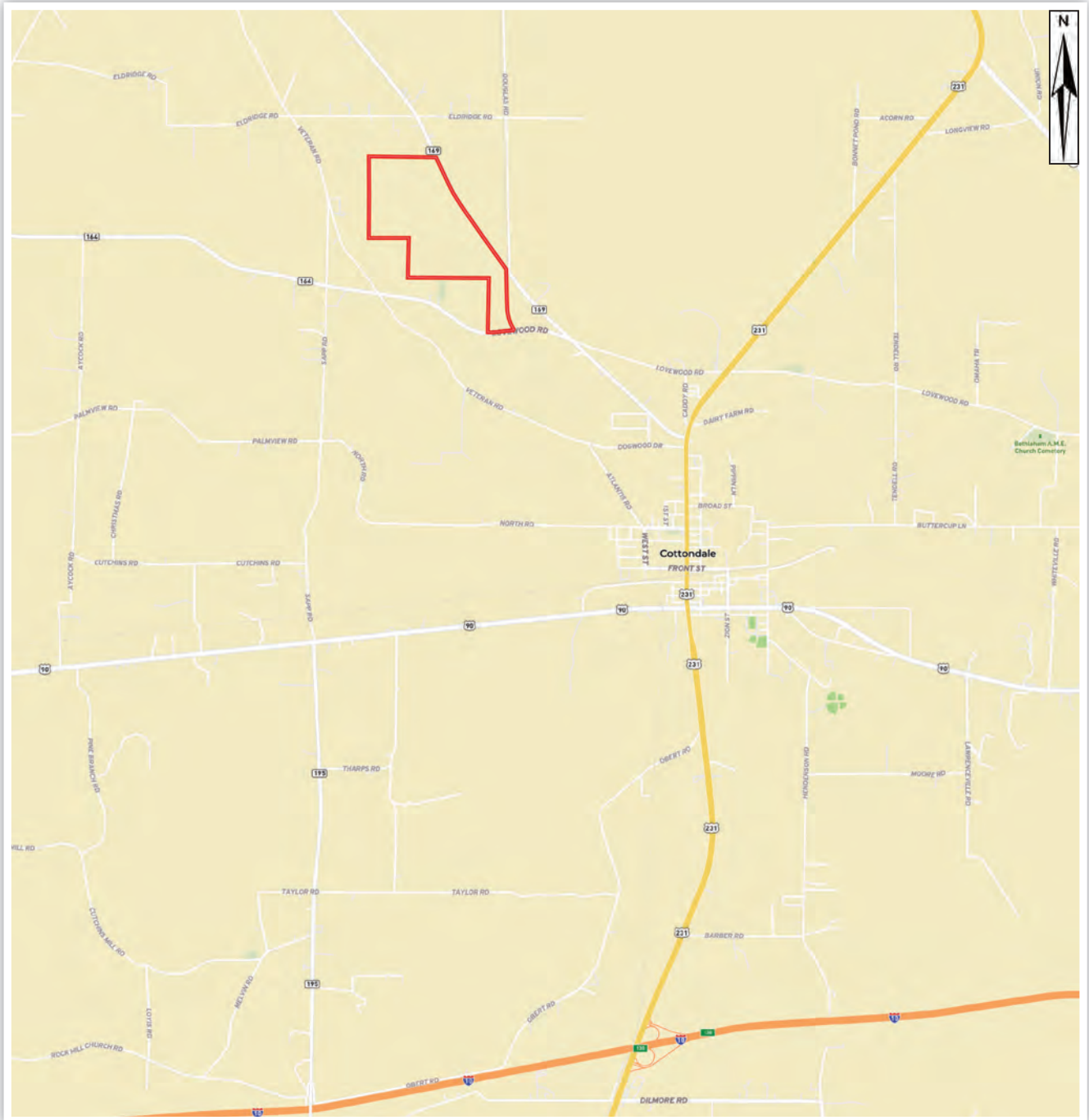
Arnie Rogers, Licensed Real Estate Broker
Verdura Realty, LLC • 316 Williams Street • Tallahassee, FL 32303
Cell: 850.491.3288 • Email: arogers@verduraproperties.com
www.VerduraProperties.com



Please note that while all information is believed to be reliable, none is guaranteed.

Drummond Bay

Location



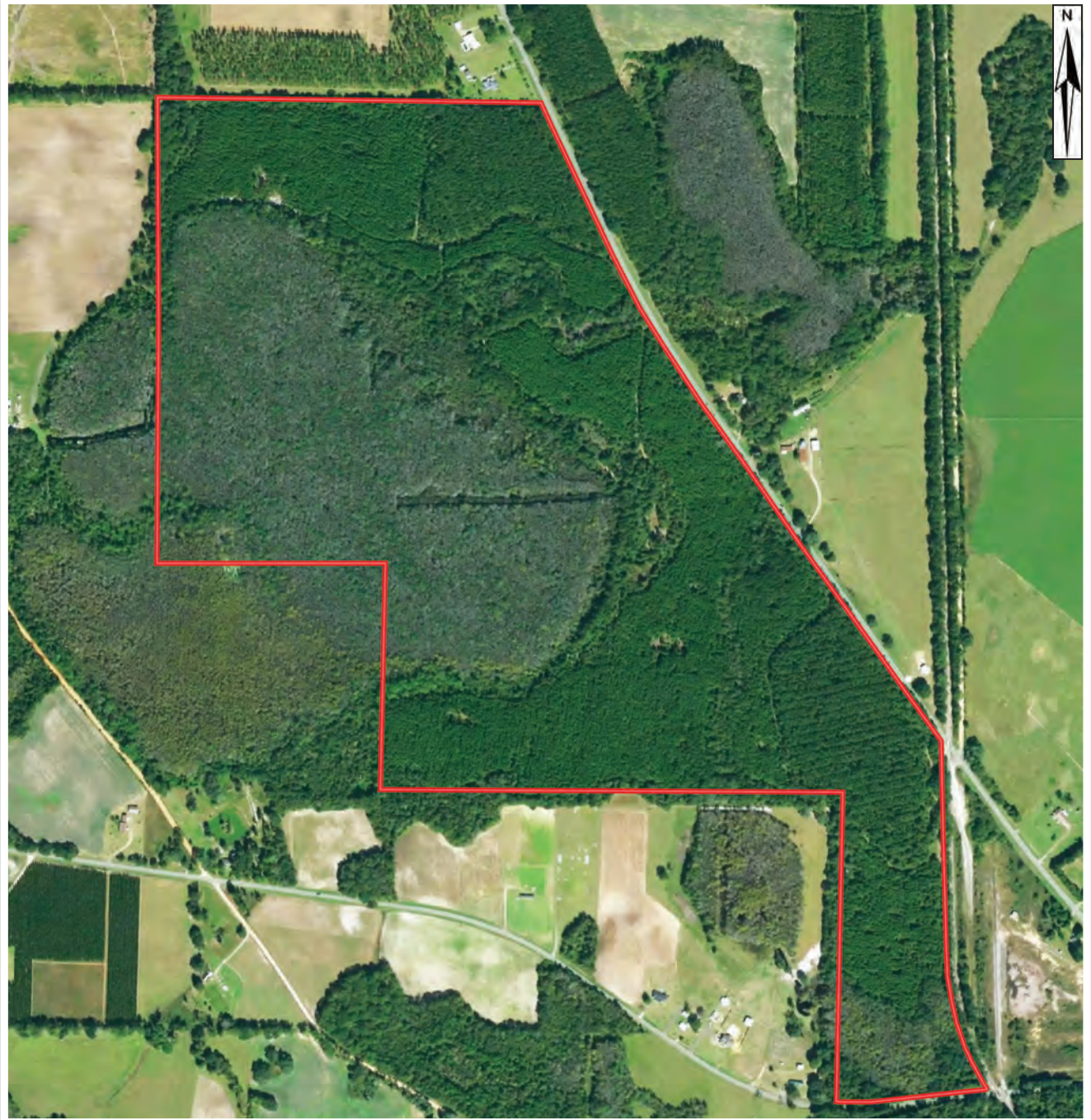
Arnie Rogers, Licensed Real Estate Broker
Verdura Realty, LLC • 316 Williams Street • Tallahassee, FL 32303
Cell: 850.491.3288 • Email: arogers@verduraproperties.com
www.VerduraProperties.com



Please note that while all information is believed to be reliable, none is guaranteed.

Drummond Bay

Aerial



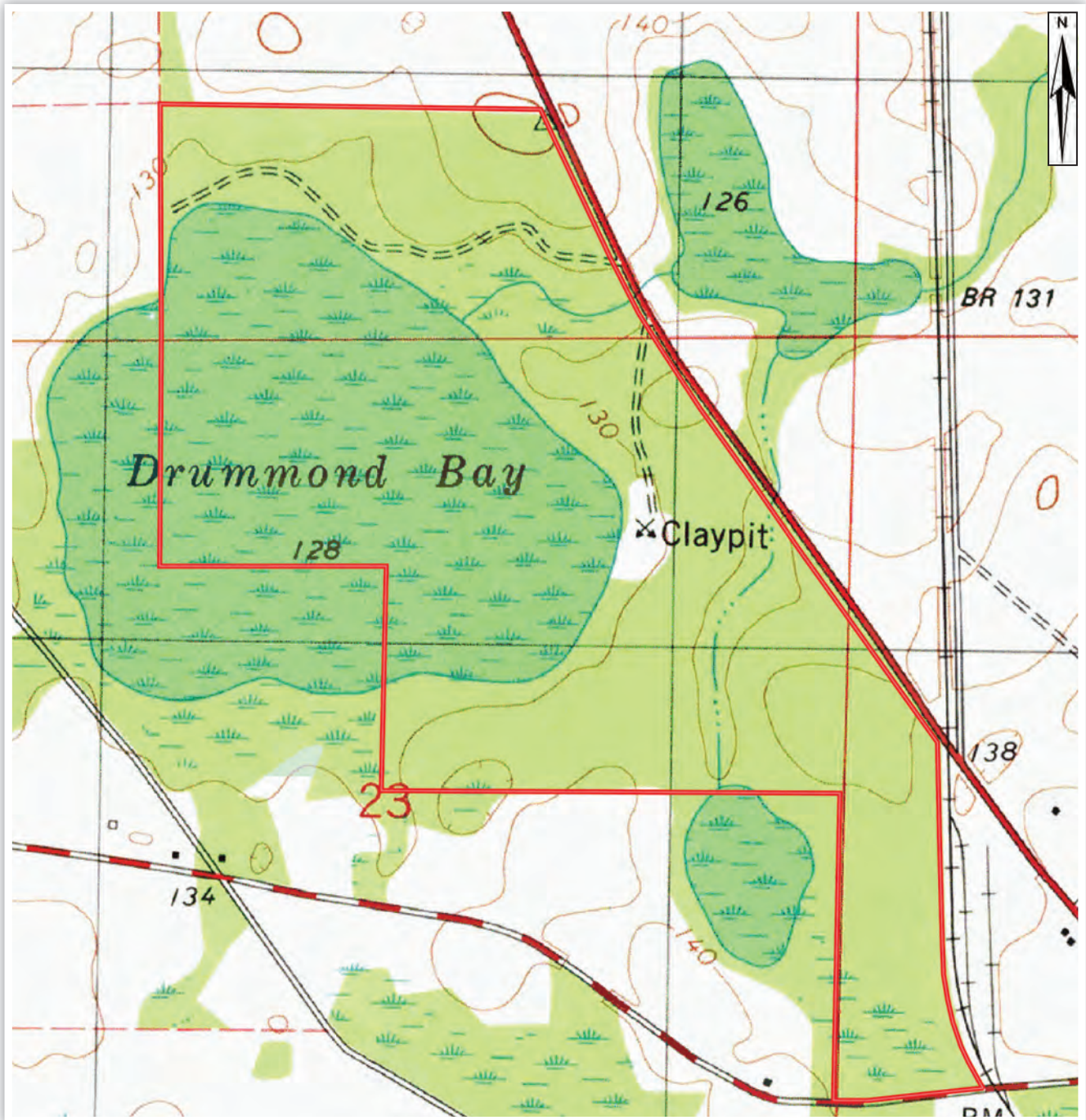
Arnie Rogers, Licensed Real Estate Broker
Verdura Realty, LLC • 316 Williams Street • Tallahassee, FL 32303
Cell: 850.491.3288 • Email: arogers@verduraproperties.com
www.VerduraProperties.com



Please note that while all information is believed to be reliable, none is guaranteed.

Drummond Bay

Topo



Arnie Rogers, Licensed Real Estate Broker
Verdura Realty, LLC • 316 Williams Street • Tallahassee, FL 32303
Cell: 850.491.3288 • Email: arogers@verduraproperties.com
www.VerduraProperties.com



Please note that while all information is believed to be reliable, none is guaranteed.